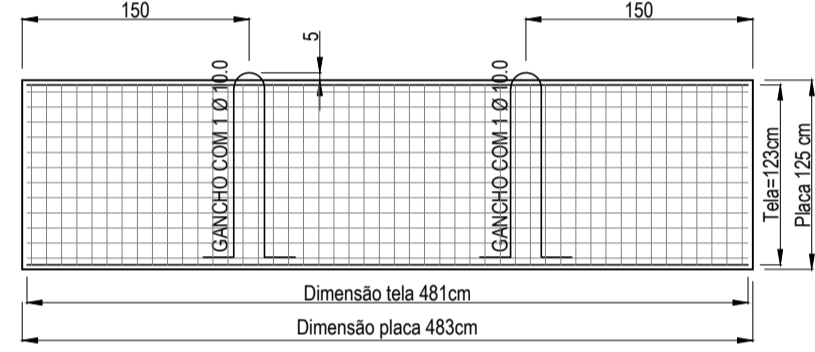
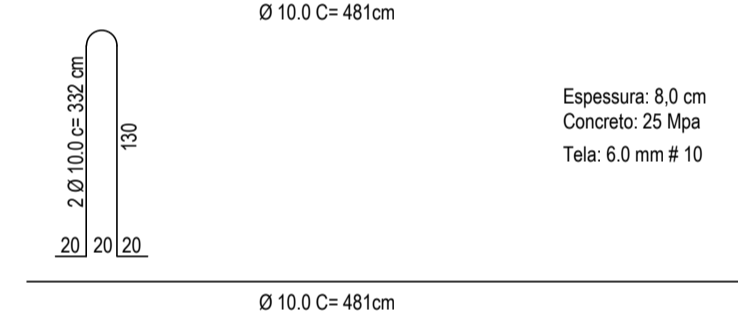


DETALHE DAS PLACAS PRÉ-MOLDADAS DE CONCRETO
Esc.: 1/50

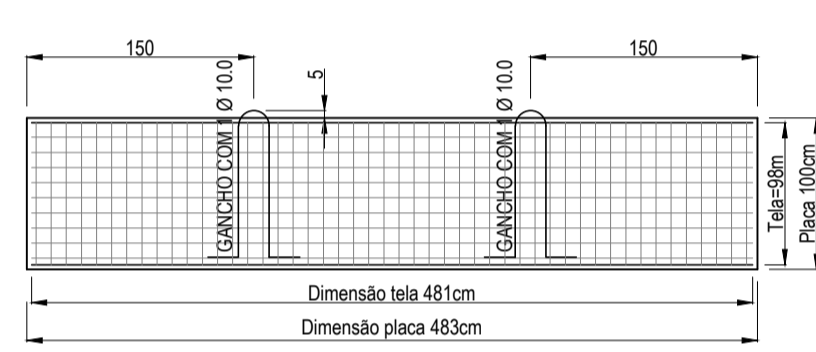
Placa de concreto 4,83x1,25



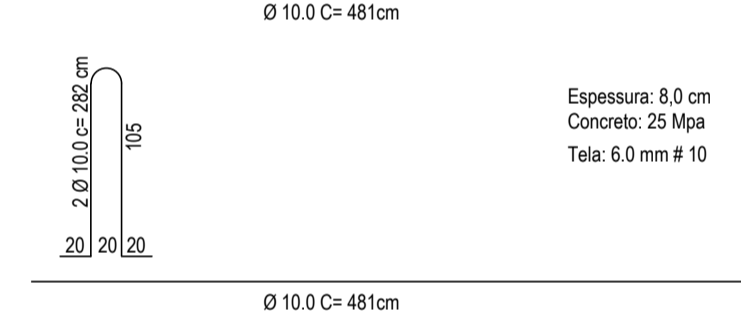
Armaduras complementares



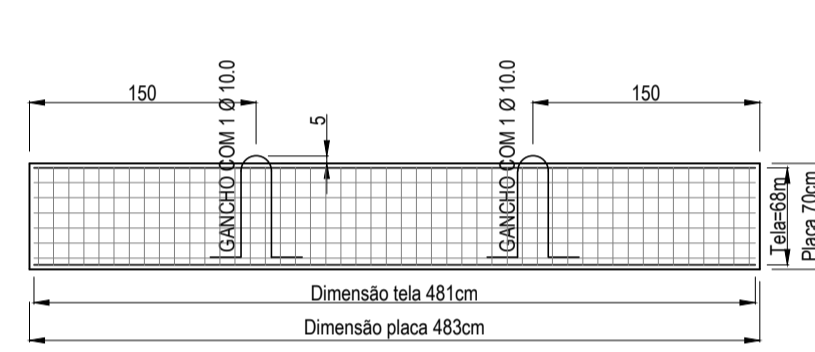
Placa de concreto 4,83x1,00



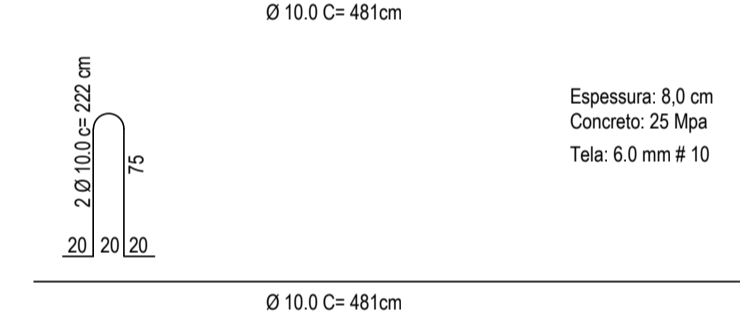
Armaduras complementares



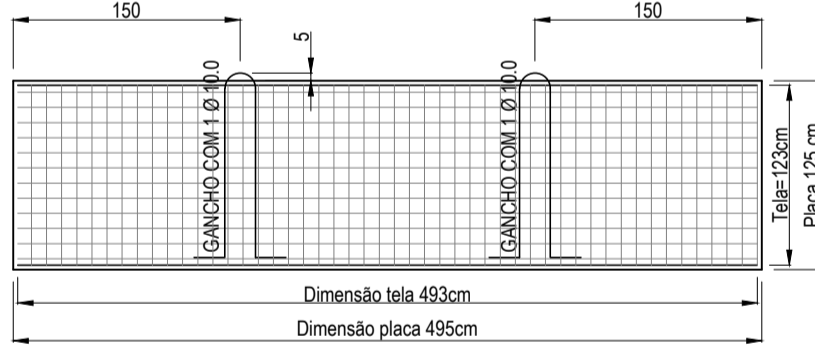
Placa de concreto 4,83x0,70



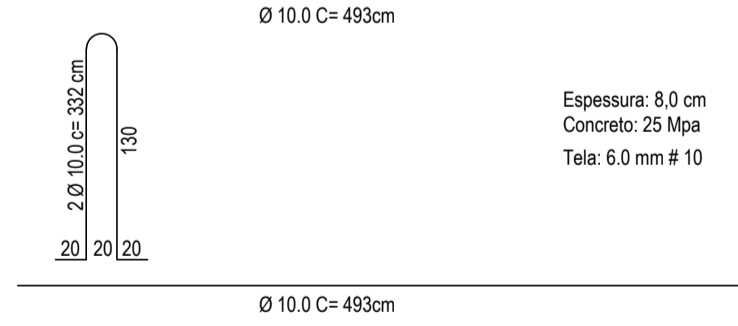
Armaduras complementares



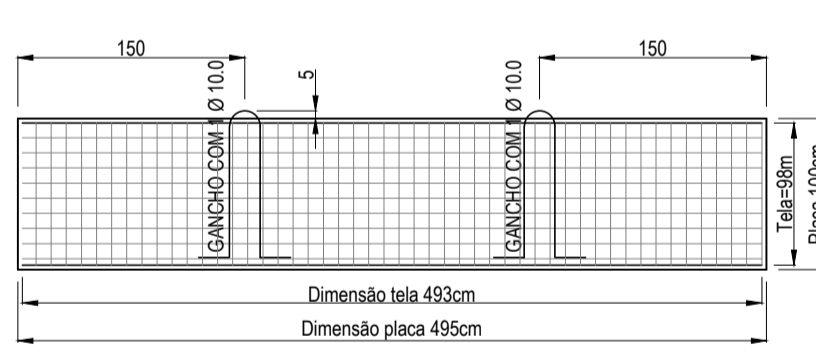
Placa de concreto 4,95x1,25



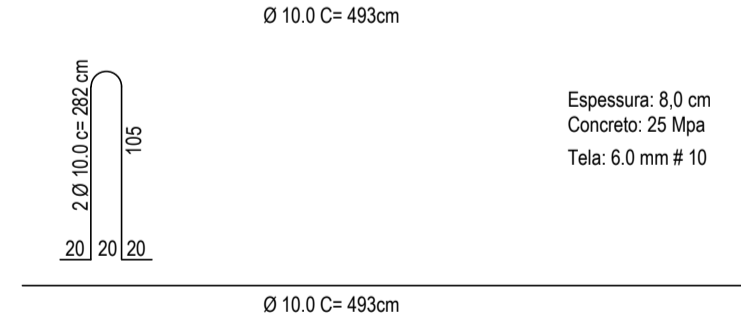
Armaduras complementares



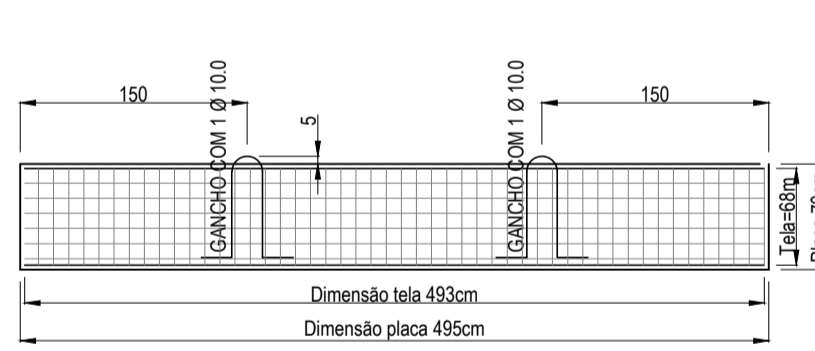
Placa de concreto 4,95x1,00



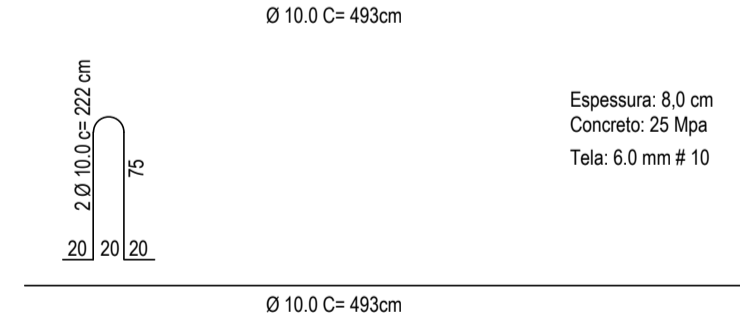
Armaduras complementares



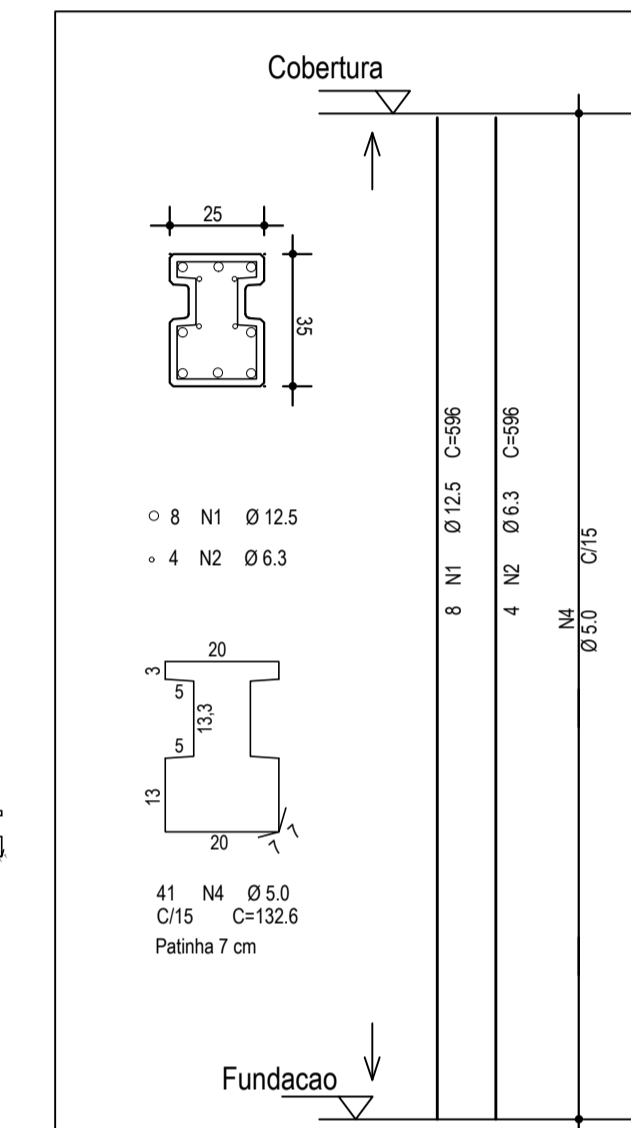
Placa de concreto 4,95x0,70



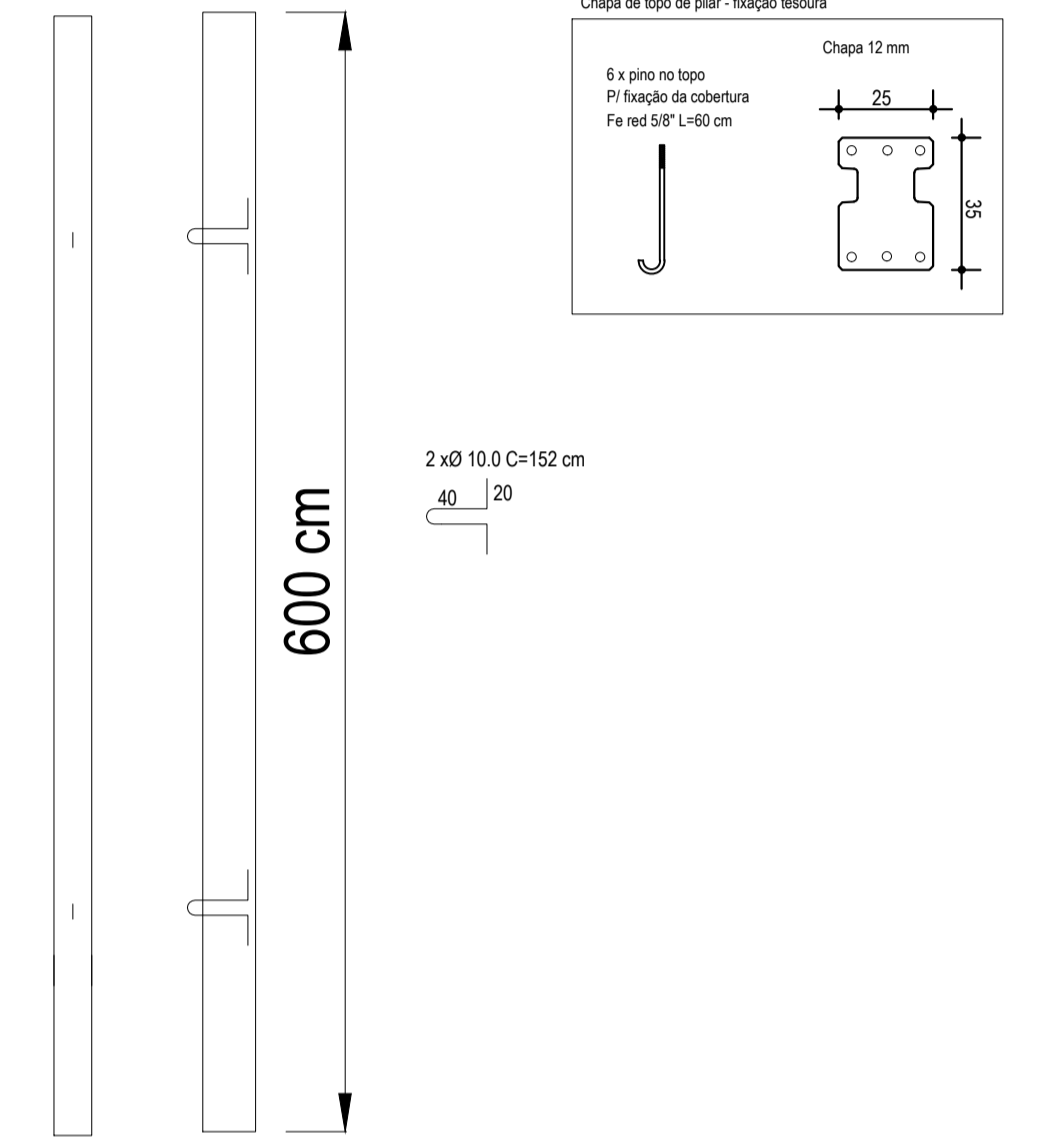
Armaduras complementares




DETALHE DOS PILARES PRÉ-MOLDADOS DE CONCRETO
Esc.: Sem escala



Vista 1





Prefeitura Municipal de Humaitá/RS
Secretaria Municipal de Habitação e Urbanismo
Av. João Pessoa, nº 414

PROJETO:	PAVILHÃO INDUSTRIAL
ASSUNTO:	CORTE, FACHADA E DETALHES
ENDEREÇO:	AV. INDUSTRIAL, LOTE Nº 5 DA QUADRA 108
PROPRIETÁRIO:	PREFEITURA MUNICIPAL DE HUMAITÁ/RS
<p>Paulo Antônio Schwade PREFEITO MUNICIPAL</p> <p>Luís Felipe Fähr ENGENHEIRO CIVIL CREA/RS 230304</p>	

ESCALA: 1:100

ÁREA: 560,12m²

DATA: JAN/2023

RESENHO:

PRANCHA: 02/06